

# PRODUCT

Important Information on Georgia-Pacific Gypsum

# Bulletin

## Create a One Coat Float Assembly with DensShield® Tile Backer

DensShield® Tile Backer from Georgia-Pacific Gypsum allows contractors to build a one coat float tile assembly with ease. Many local code bodies no longer allow greenboard, which traditionally has been used in one coat float systems, to be used in wet areas.

With DensShield Tile Backer, your installation methods remain the same but the advantages of using DensShield panels include:

- A built-in moisture barrier (no vapor barrier needed)
- Use of staples, keeping installation methods the same
- A proprietary, patented moisture-resistant core, which prevents moisture from entering wall cavities
- A fiberglass surface prevents delamination, deterioration and eliminates a potential food source for mold.

DensShield Tile Backer can be installed as a baseboard for a traditional reinforced floated wall tile system attached to the framing. DensShield panels may be hung either parallel (horizontal) or perpendicular (vertical) to framing for wall applications. Grey coated side should always face out, away from studs.

### Installation

- Framing should be spaced no greater than 16" o.c.
- Attach DensShield panels spacing fasteners 6" o.c. along studs for both wood and metal framing. Do not countersink fasteners. Drive fasteners flush with grey-coated surface.

**Nails:** Galvanized roofing nails 1½" for ½" DensShield panels, 1¾" for ⅝" DensShield® FireGuard® Type X panels.

**Screws:** Corrosion-resistant minimum 1" bugle head type S for metal studs and 1¼" bugle head type W for wood studs.



Georgia-Pacific

# DensShield®

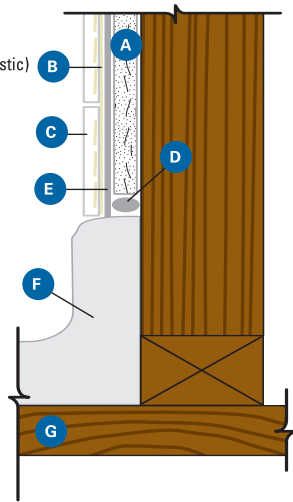
Tile Backer

- For tub and pre-formed shower pans, leave a ⅛" to ¼" gap above the lip, fill with flexible sealant.
- For shower pan receptors with membranes, the shower pan membrane can be placed over the face of the DensShield panel as long as the lath membrane is installed in weatherboard fashion over the pan membrane.
- Georgia-Pacific Gypsum recommends that a vapor barrier not be placed between the framing members and the DensShield board.
- Attach membrane and lath (or paper backed lath) in a weatherboard fashion per lath and membrane manufacturers' guidelines. Do not overstress membrane in corners. Apply mortar bed per TCA assembly W231. Membrane (ANSI A-2.1.8) shall be installed such that water is continually drained toward the drain.

(Continued)

**DensShield® with Tile Installation**

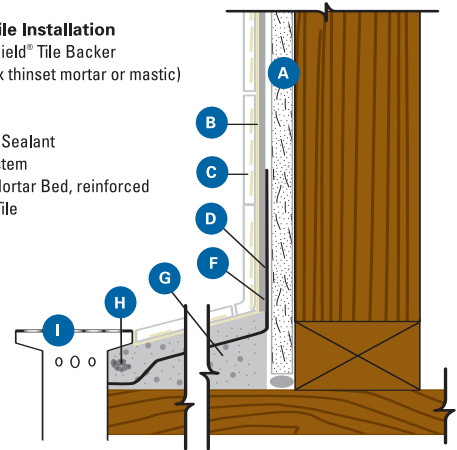
- A. 1/2" or 5/8" DensShield® Tile Backer
- B. Tile Adhesive (latex thinset mortar or mastic)
- C. Tile
- D. 1/4" Gap & Flexible Sealant
- E. One-Coat Float System
- F. Preformed Shower Pan/Bathtub
- G. Subfloor



**Figure 1**

**DensShield® with Tile Installation**

- A. 1/2" or 5/8" DensShield® Tile Backer
- B. Tile Adhesive (latex thinset mortar or mastic)
- C. Tile
- D. Shower Pan Liner
- E. 1/4" gap & Flexible Sealant
- F. One-Coat Float System
- G. Sloped Underlay Mortar Bed, reinforced
- H. Crushed Stone or Tile
- I. Drain
- J. Subfloor



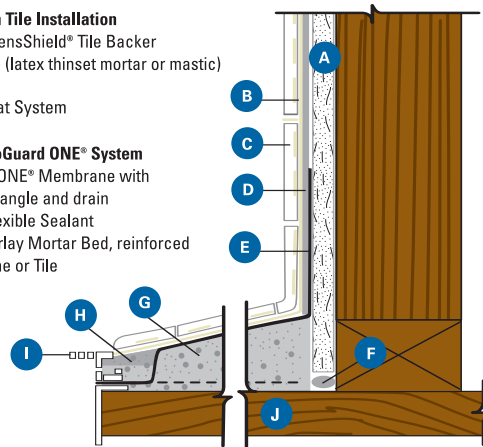
**Figure 2**

**DensShield® with Tile Installation**

- A. 1/2" or 5/8" DensShield® Tile Backer
- B. Tile Adhesive (latex thinset mortar or mastic)
- C. Tile
- D. One Coat Float System

**Mer-Krete™ HydroGuard ONE® System**

- E. HydroGuard ONE® Membrane with Fabric at 90° angle and drain
- F. 1/4" gap & Flexible Sealant
- G. Sloped Underlay Mortar Bed, reinforced
- H. Crushed Stone or Tile
- I. Drain
- J. Subfloor



**Figure 3**

Please choose the appropriate installation method for your project.



**SALES INFORMATION AND ORDER PLACEMENT**

U.S.A. Midwest: 1-800-876-4746 West: 1-800-824-7503  
 South: 1-800-327-2344 Northeast: 1-800-947-4497

CANADA Canada Toll Free: 1-800-387-6823  
 Quebec Toll Free: 1-800-361-0486

**TECHNICAL INFORMATION**

Georgia-Pacific Gypsum Technical Hotline  
 U.S.A. and Canada: 1-800-225-6119  
 www.gpgypsum.com



**TRADEMARKS**

DENSSHIELD and the GEORGIA-PACIFIC logo are trademarks owned by or licensed to Georgia-Pacific Gypsum LLC. MER-KRETE and HYDROGUARD ONE are trademarks of Mer-Krete Products, Inc. TCNA Logo is a trademark of Tile Council of North America.

**UPDATES AND CURRENT INFORMATION**

The information in this document may change without notice. Visit our website at www.gpgypsum.com for updates and current information.

**LIMITATION OF REMEDIES AND DAMAGES**

Unless otherwise stated in our written warranty for these products, our sole liability for any product claim shall be limited to reimbursement of the cost of repair or replacement of the affected product, up to a maximum amount of two times the original purchase price for the affected product. We shall not be responsible under any

circumstances for lost profits, damage to a structure or its contents, or indirect, incidental, special or consequential damages. Claims shall be deemed waived if they are not submitted to us in writing within ten (10) days after discovery of a product defect/circumstance giving rise to a claim.

**CAUTION: For product fire, safety and use information, go to gp.com/safetyinfo.**

**HANDLING AND USE**

CAUTION: This product contains fiberglass facings which may cause skin irritation. Dust and fibers produced during the handling and installation of the product may cause skin, eye and respiratory tract irritation. Avoid breathing dust and minimize contact with skin and eyes. Wear long sleeve shirts, long pants and eye protection. Always maintain adequate ventilation. Use a dust mask or NIOSH/MSHA approved respirator as appropriate in dusty or poorly ventilated areas.

For additional product fire, safety and use information go to [www.gp.com/safetyinfo](http://www.gp.com/safetyinfo) or call 1-800-225-6119.

**FIRE SAFETY CAUTION**

Passing a fire test in a controlled laboratory setting and/or certifying or labeling a product as having a one-hour, two-hour, or any other fire resistance or protection rating and, therefore, as acceptable for use in certain fire rated assemblies/systems, does not mean that either a particular assembly/system incorporating the product, or any given piece of the product itself, will necessarily provide one-hour fire resistance, two-hour fire resistance, or any other specified fire resistance or protection in an actual fire. In the event of an actual fire, you should immediately take any and all actions necessary for your safety and the safety of others without regard for any fire rating of any product or assembly/system.